



GMT MONTHLY MEMBERSHIP PROGRESS REPORT

Results as of: 8/31/2019

Multiple District 325

LOCATION: NEPAL

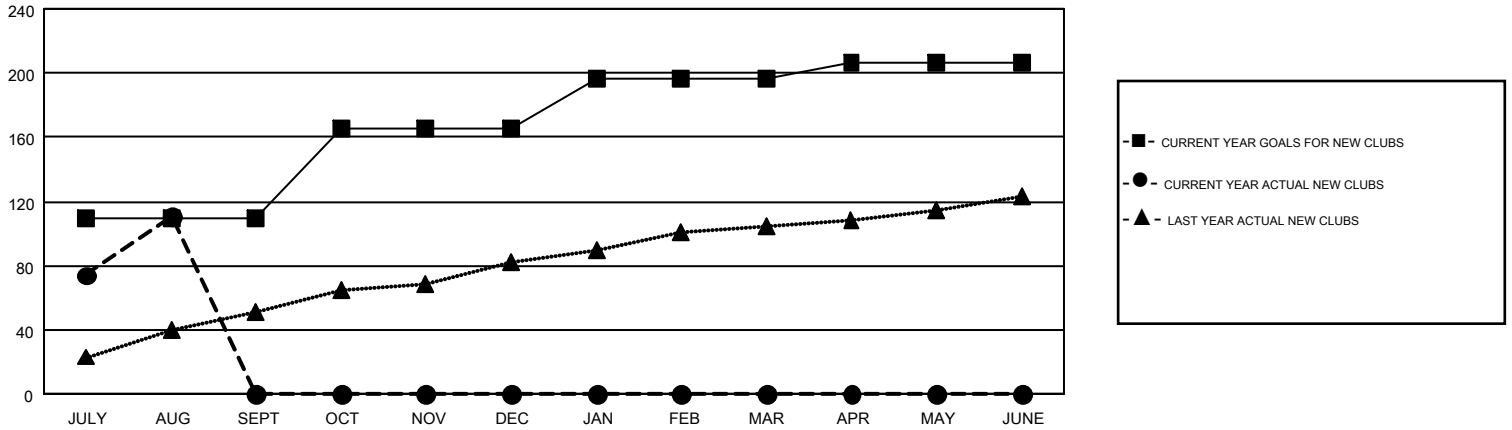
GMT: OPEN

GMT CA 6

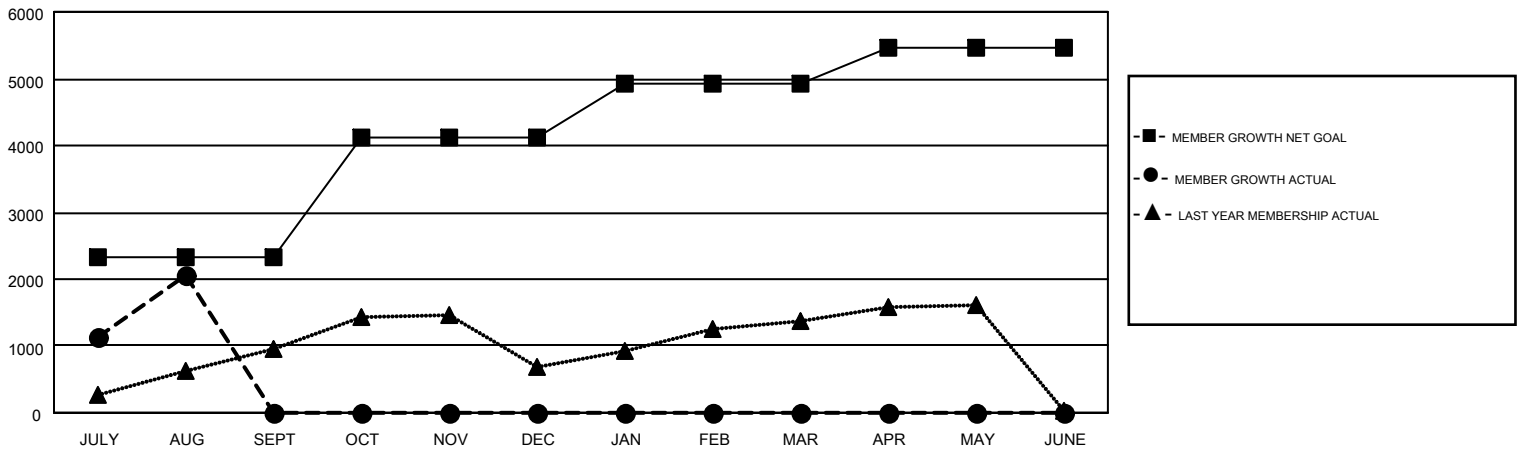
| Clubs | | | |
|-----------------------|---------------|-----------|---------------|
| RESULTS FOR 2019-2020 | | | |
| QUARTER | NEW CLUB GOAL | NEW CLUBS | DROPPED CLUBS |
| JULY/AUG/SEPT | 110 | 111 | 3 |
| OCT/NOV/DEC | 55 | 0 | 0 |
| JAN/FEB/MAR | 31 | 0 | 0 |
| APR/MAY/JUNE | 11 | 0 | 0 |

| Members | | | |
|-----------------------|------------------------|----------------------|--|
| RESULTS FOR 2019-2020 | | | |
| QUARTER | MEMBER GROWTH NET GOAL | MEMBER GROWTH ACTUAL | DROPPED MEMBERS ACTUAL (including transfers) |
| JULY/AUG/SEPT | 2325 | 2,985 | 890 |
| OCT/NOV/DEC | 1785 | 0 | 0 |
| JAN/FEB/MAR | 805 | 0 | 0 |
| APR/MAY/JUNE | 560 | 0 | 0 |

GOALS AND ACTUAL NEW CLUBS CUMULATIVE



GOALS AND ACTUAL MEMBERS CUMULATIVE



| | | |
|------------------------|---|--|
| DROPPED CLUBS: 3 | 280 CLUBS OF 1236 ADDED 1 OR MORE NEW MEMBERS | GENDER DISTRIBUTION |
| | | MALE 23,843 (73.11%) |
| | | FEMALE 8,771 (26.89%) |
| DROPPED MEMBERS | CLICK HERE FOR CUMULATIVE MEMBERSHIP DATA | TOTAL FAMILY UNIT MEMBERS 18,360 |
| DECEASED 5 | | FAMILY MEMBERS PAYING HALF DUES 11,299 |
| CLUB CANCELLED 21 | | |
| OTHER 864 | | |
| TOTAL 890 | | |